

Detecting Sulfur Dioxide from a Herbal Background Using a LONESTAR™ Portable Analyzer



[Contact us](#)



www.owlstonenanotech.com

Introduction.....	3
Objectives.....	3
Method	3
Results	4
Generating Calibration Standards with the OVG-4.....	7
Adding Precision Humidity with the Owlstone OHG-4 Humidity Generator	8
Appendix A: FAIMS Technology at a Glance	9
Sample preparation and introduction	9
Carrier Gas	10
Ionisation Source	10
Mobility.....	12
Detection and Identification	14

Introduction

Objectives

Feasibility study of using FAIMS based instrumentation for the detection of SO₂ 5-100mg kg (ppm_{w/w}) in Chinese medicine.

SO₂ and sulfites are added as preservatives to Chinese medicine; however, at elevated concentrations these compounds have adverse health effects. Usual analysis is carried out by headspace GC where a low molarity acid is added to the sample. Adding acid converts sulphites to SO₂ and releases it into the headspace which is then analysed.

This report details the results of FAIMS detection of SO₂ in the headspace of tea samples. Tea provides a surrogate background similar to that found for a range of herbal products and extracts.

Method

Using the experimental setup in Figure 1 a system blank was taken to record instrument background, followed by a 9.6g tea sample to characterize the sample background. Then a 50ppm_{v/v} SO₂ in N₂ Cylinder was used to generate a range of headspace concentrations of SO₂ as shown in Table 1. The lowest concentration was then purged over a 9.6g tea sample for proof of principle SO₂ detection in tea.

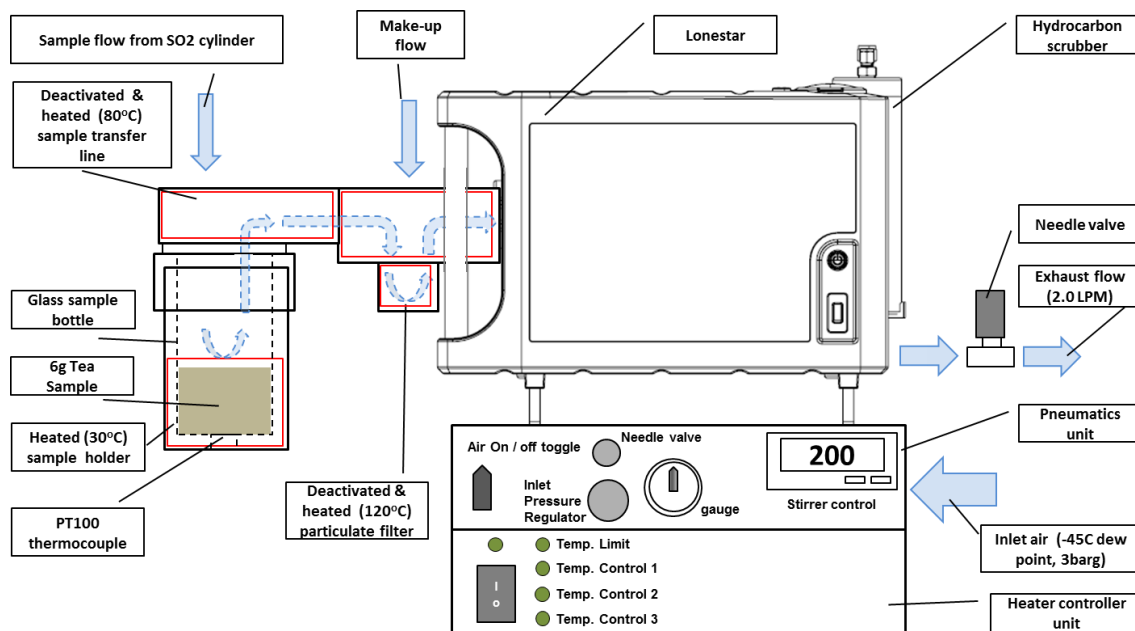


Figure 1 System schematic of experimental apparatus

Table 1 SO₂ concentrations

SO ₂ Cylinder flow / ml min ⁻¹	Total flow / ml min ⁻¹	SO ₂ Headspace concentration / ppm _{v/v}
1	2000	0.025
5	2000	0.125
2	2000	0.050

Results

For each analysis, a FAIMS DF matrix is obtained. This is a rich data format representing positive and negative ion detection at different electric fields. Below in Figure 2 is an example of a system blank showing the reactive ion peaks (RIP) in both positive and negative mode, as well as a 9.6g tea background and 0.5ppm_{v/v} SO₂ headspace. The area of analytical interest is usually limited to a single electric field setting which is chosen based on the best resolution and sensitivity for the target analyte from the background matrix, from the data presented in Figure 2 50%DF was chosen as the electric field setting from which to work with and Figure 3 shows the overlaid CV spectra with the SO₂ peak clearly resolved from the tea background in the negative mode.

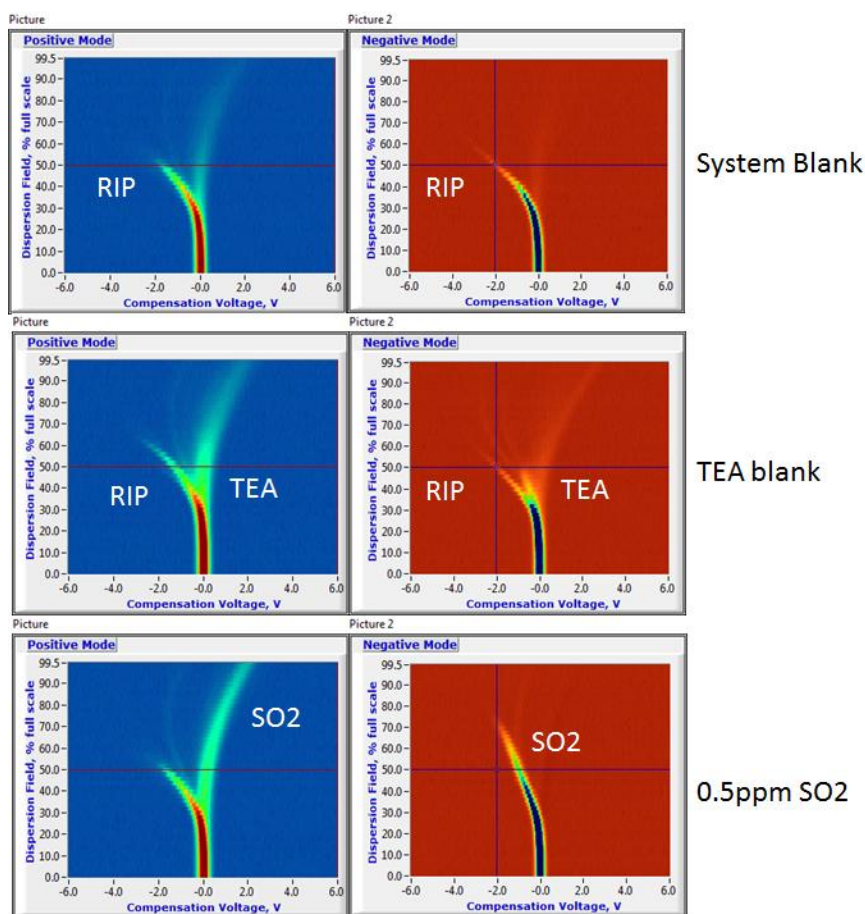


Figure 2 DF matrices, System blank DF matrix (top), Tea blank (middle) and 0.5ppm SO₂ (bottom)

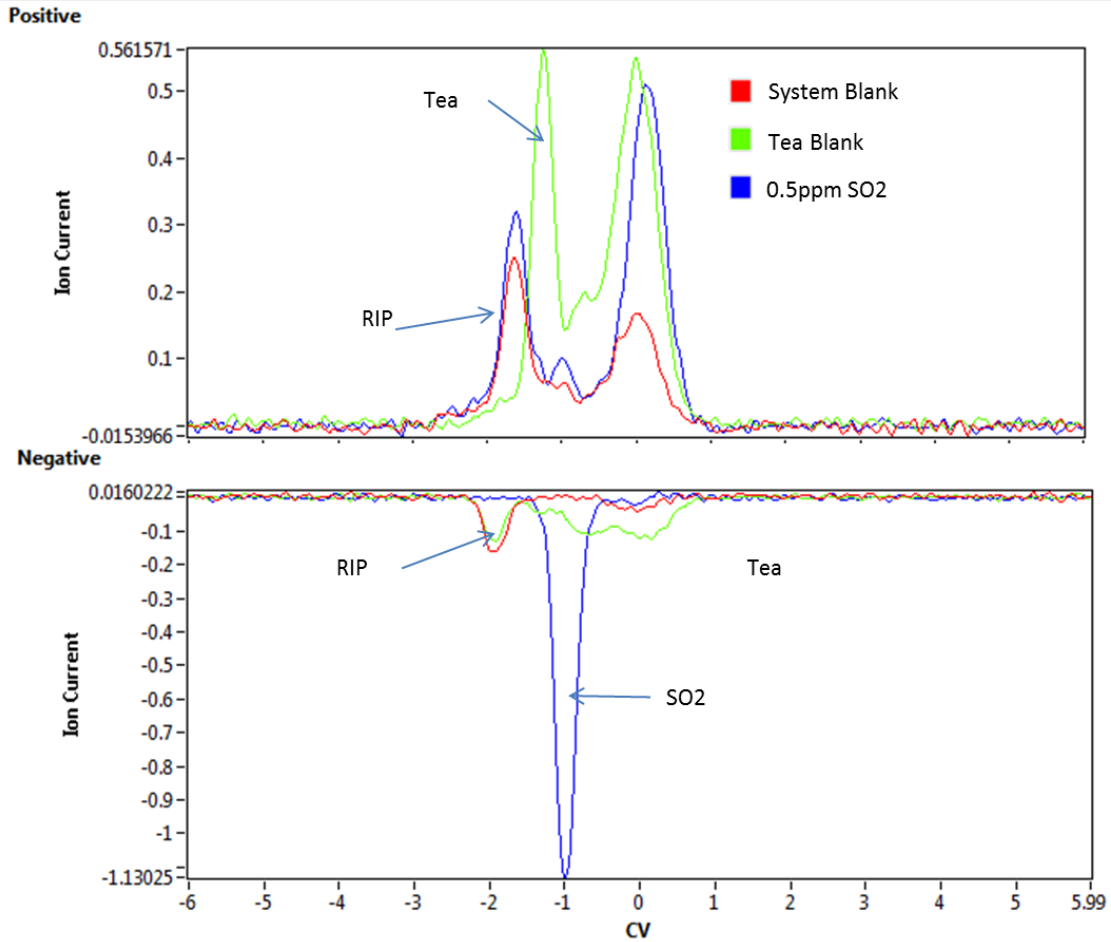


Figure 3 Comparison at 50% DF of CV spectra of the system blank, Tea background and 0.5ppm SO₂ response.

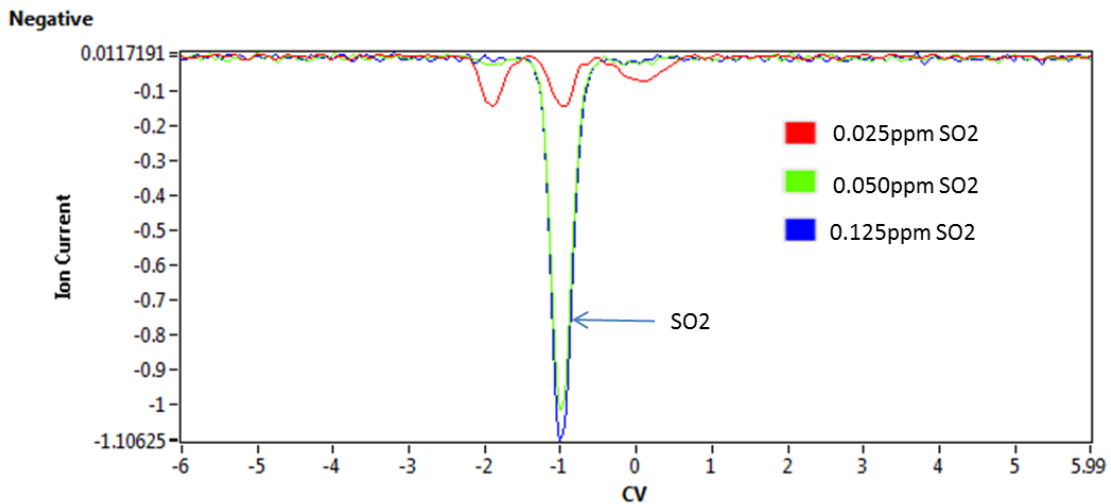


Figure 4 Overlaid negative mode CV spectra at 50% DF of different SO₂ headspace concentrations

Different SO₂ headspace concentrations were analysed by the Lonestar to get a rough approximation of the lower limit of the vapour phase detection of SO₂ and the resultant spectra is shown in Figure 4. Here it is shown that there is still a very good response at the 25ppb_{v/v} concentration and that as the concentration increases the sensor tends towards saturation.

With a 25ppb_{v/v} detection capability this means that assuming that we managed to convert / transfer 25% of the SO₂ of a 9.6g sample to the headspace this would mean a detection capability of 0.054mg kg (ppm) well below the 5-100mg kg requirement.

The last set of data presented in Figure 5 is SO₂ purge over a 9.6g tea samples at two concentrations to check for background interferences. From this it can be seen with this particular tea the SO₂ is seen at the 0.025ppm concentration with no interference from the tea. This is however only one particular brand of tea and more testing of different medicinal backgrounds is required to fully characterise for interferent responses.

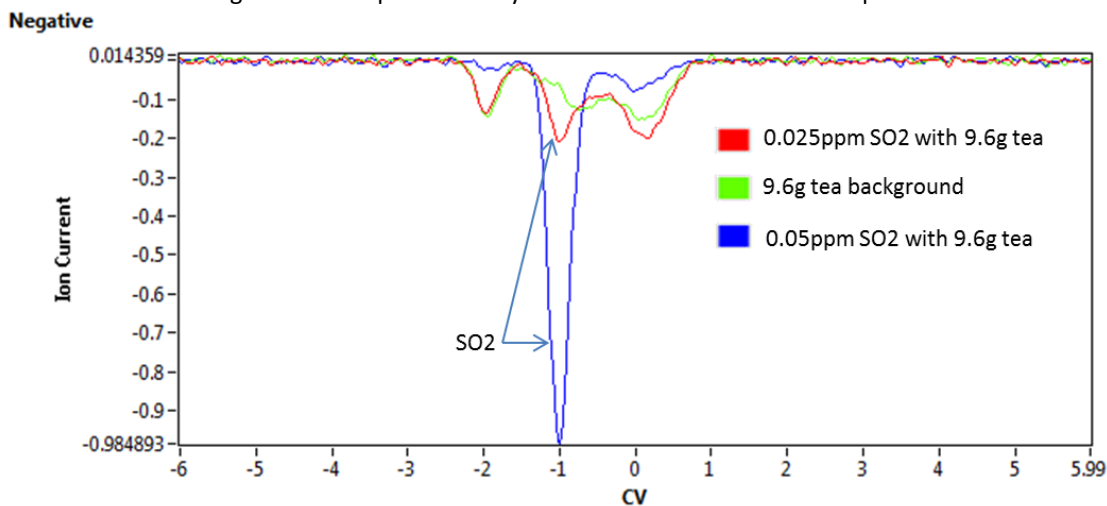


Figure 5 Overlaid negative mode CV spectra at 50% DF of different SO₂ headspace concentrations in a 9.6g tea background

Generating Calibration Standards with the OVG-4

Calibration standards can be generated using permeation tubes and Owlstone's OVG-4 Calibration Gas Generator. The permeation tubes are gravimetrically calibrated to NIST traceable standards. For this study an acetaldehyde permeation source was used as a confidence check to ensure that the Lonestar was operating within defined parameters.

BENEFITS

- High number of available analyte compounds, including solids and liquids as well as gases
- Easy generation of multi-component mixtures using combinations of tubes
- Cost savings by elimination of multiple expensive gas cylinders
- Reduced risk of exposure to dangerous chemicals due to small quantities used
- Fast and easy sample replacement
- Elimination of hazards associated with high pressure cylinders
- Quick and easy to set up and generate blended gas mixtures
- Adjustable concentration levels from ppm to ppb
- High accuracy and precision, even at the lowest concentrations
- Superior long term stability and repeatability*
- Portable, with compact footprint
- Easily integrated with the Owlstone Humidity Generator (OHG) for realistic environmental testing

**Owlstone offers an optional service for regular validation and instrument calibration*

The Owlstone OVG-4 is a system for generating NIST traceable chemical and calibration gas standards. It is easy to use, cost-effective and compact and produces a very pure, accurate and repeatable output.

The very precise control of concentration levels is achieved using permeation tube technology,

eliminating the need for multiple gas cylinders and thus reducing costs, saving space and removing a safety hazard. Complex gas mixtures can be accurately generated through the use of multiple tubes.

By swapping out permeation tubes the OVG-4 can be used to generate over 500 calibration standards to test and calibrate almost any gas sensor, instrument or analyzer, including FTIR, NDIR, Raman, IMS, GC, GC/MS.

Current customers include – SELEX GALILEO, US Army, US Air Force, US Defense Threat Reduction Agency, Home Office Scientific Development Branch, DSTL, Commissariat à l'Énergie Atomique, EADS, United Technologies, Alphasense, Xtralis, LGC, Genzyme, IEE, Institut de la Corrosion, Rutherford Appleton Laboratory, University of Cambridge, Cranfield University among others.



Adding Precision Humidity with the Owlstone OHG-4 Humidity Generator

The OVG-4 can be integrated with the OHG-4 Humidity Generator to create realistic humidified test atmospheres for more realistic testing. Within this study the hygrometer was used to provide accurate inline humidity monitoring of the sample introduction line.



Appendix A: FAIMS Technology at a Glance

Field asymmetric ion mobility spectrometry (FAIMS), also known as differential mobility spectrometry (DMS), is a gas detection technology that separates and identifies chemical ions based on their mobility under a varying electric field at atmospheric pressure. Figure 6 is a schematic illustrating the operating principles of FAIMS.

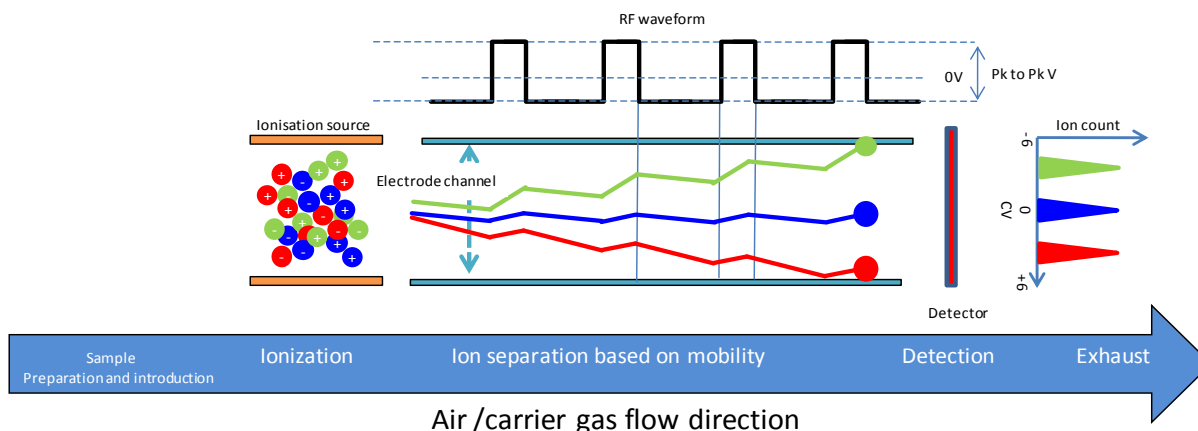


Figure 6 FAIMS schematic. The sample in the vapour phase is introduced via a carrier gas to the ionisation region, where the components are ionised via a charge transfer process or by direct ionisation, dependent on the ionisation source used. It is important to note that both positive and negative ions are formed. The ion cloud enters the electrode channel, where an RF waveform is applied to create a varying electric field under which the ions follow different trajectories dependent on the ions' intrinsic mobility parameter. A DC voltage (compensation voltage, CV) is swept across the electrode channel shifting the trajectories so different ions reach the detector, which simultaneously detects both positive and negative ions. The number of ions detected is proportional to the concentration of the chemical in the sample

Sample preparation and introduction

FAIMS can be used to detect volatiles in aqueous, solid and gaseous matrices and can consequently be used for a wide variety of applications. The user requirements and sample matrix for each application define the sample preparation and introduction steps required. There are a wide variety of sample preparation, extraction and processing techniques each with their own advantages and disadvantages. It is not the scope of this overview to list them all, only to highlight that the success of the chosen application will depend heavily on this critical step, which can only be defined by the user requirements.

There are two mechanisms of introducing the sample into the FAIMS unit: discrete sampling and continuous sampling. With discrete sampling, a defined volume of the sample is collected by weighing, by volumetric measurement via a syringe, or by passing vapor through an adsorbent for pre-concentration, before it is introduced into the FAIMS unit. An example of this would be attaching a container to the instrument containing a fixed volume of the sample. A carrier gas (usually clean dry air) is used to transfer the sample to the ionization region. Continuous sampling is where the resultant gaseous sample is continuously purged into the FAIMS unit and either is diluted by the carrier gas or acts as the carrier gas itself. For example, continuously drawing air from the top of a process vat.

The one key requirement for all the sample preparation and introduction techniques is the ability to reproducibly generate and introduce a headspace (vapour) concentration of the target analytes that exceeds the lower limits of detection of the FAIMS device.

Carrier Gas

The requirement for a flow of air through the system is twofold: Firstly to drive the ions through the electrode channel to the detector plate and secondly, to initiate the ionization process necessary for detection.

As exhibited in Figure 7, the transmission factor (proportion of ions that make it to the detector) increases with increasing flow. The higher the transmission factor, the higher the sensitivity. Higher flow gives a larger full width half maximum (FWHM) of the peaks but also decreases the resolution of the FAIMS unit (see Figure 8).

The air/carrier gas determines the baseline reading of the instrument. Therefore, for optimal operation it is desirable for the carrier to be free of all impurities (< 0.1 ppm methane) and the humidity to be kept constant. It can be supplied either from a pump or compressor, allowing for negative and positive pressure operating modes.

Ionisation Source

There are three main vapor phase ion sources in use for atmospheric pressure ionization; radioactive nickel-63 (Ni-63), corona discharge (CD) and ultra-violet radiation (UV). A comparison of ionization sources is presented in Table 2.

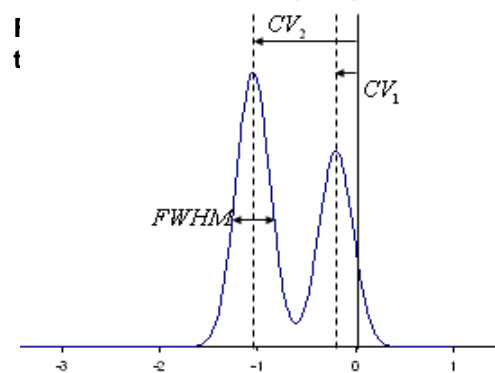
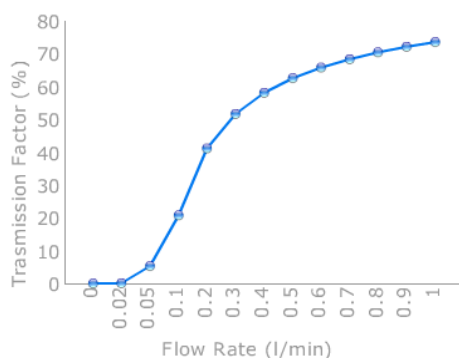


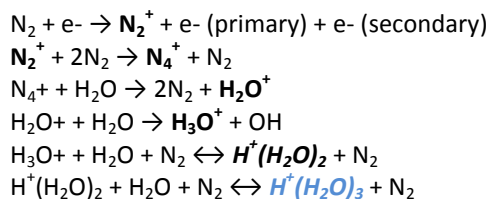
Figure 8 FWHM of ion species at set CV

Ionisation Source	Mechanism	Chemical Selectivity
Ni ⁶³ (beta emitter) creates a positive / negative RIP	Charge transfer	Proton / electron affinity
UV (Photons)	Direct ionisation	First ionisation potential
Corona discharge (plasma) creates a positive / negative RIP	Charge transfer	Proton / electron affinity

Table 2 FAIMS ionization source comparison

Ni-63 undergoes beta decay, generating energetic electrons, whereas CD ionization strips electrons from the surface of a metallic structure under the influence of a strong electric field. The generated electrons from the metallic surface or Ni-63 interact with the carrier gas (air) to form stable +ve and -ve intermediate ions which give rise to reactive ion peaks (RIP) in the positive and negative FAIMS spectra (Figure 9). These RIP ions then transfer their charge to neutral molecules through collisions. For this reason, both Ni-63 and CD are referred to as indirect ionization methods.

For the positive ion formation:



Ketones	2- pentanone	832 kJ/mole
Esters	Methly Acetate	822 kJ/mole
Alkenes	1-Hexene	805 kJ/mole
Alcohols	Butanol	789 kJ/mole
Aromatics	Benzene	750 kJ/mole
Water		691 kJ/mole
Alkanes	Methane	544 kJ/mole

Table 3 Overview of the proton affinity of different chemical families

Chemical Family	Electron affinity
Nitrogen Dioxide	3.91eV
Chlorine	3.61eV
Organomercurials	↑
Pesticides	
Nitro compounds	
Halogenated compounds	
Oxygen	0.45eV
Aliphatic alcohols	↑
Ketones	

Table 4 Relative electron affinities of several families of compounds

The UV ionization source is a direct ionization method whereby photons are emitted at energies of 9.6, 10.2, 10.6, 11.2, and 11.8 eV and can only ionize chemical species with a first ionization potential of less than the emitted energy. Important points to note are that there is no positive mode RIP present when using a UV ionization source and also that UV ionization is very selective towards certain compounds.

Mobility

Ions in air under an electric field will move at a constant velocity proportional to the electric field. The proportionality constant is referred to as mobility. As shown in Figure 10, when the ions enter the electrode channel, the applied RF voltages create oscillating regions of high (+V_{HF}) and low (-V_{HF}) electric fields as the ions move through the channel. The difference in the ion's mobility at the high and low electric field regimes dictates the ion's trajectory through the channel. This phenomenon is known as differential mobility.

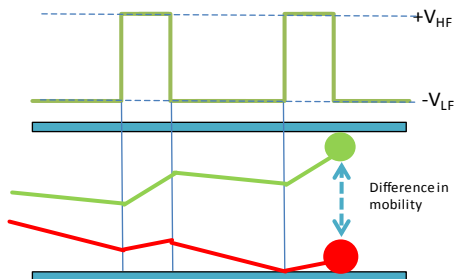


Figure 10 Schematic of a FAIMS channel showing the difference in ion trajectories caused by the different mobilities they experience at high and low electric fields

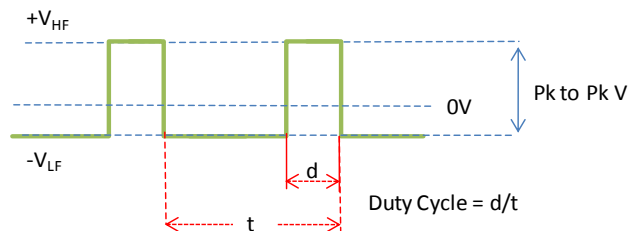


Figure 11 Schematic of the ideal RF waveform, showing the duty cycle and peak to peak voltage (Pk to Pk V)

The physical parameters of a chemical ion that affect its differential mobility are its collisional cross section and its ability to form clusters within the high/low regions. The environmental factors within the electrode channel affecting the ion's differential mobility are electric field, humidity, temperature and gas density (i.e. pressure). The electric field in the high/low regions is supplied by the applied RF voltage waveform (Figure 11). The duty cycle is the proportion of time spent within each region per cycle. Increasing the peak-to-peak voltage increases/decreases the electric field experienced in the high/low field regions and therefore influences the velocity of the ion accordingly. It is this parameter that has the greatest influence on the differential mobility exhibited by the ion.

It has been shown that humidity has a direct effect on the differential mobility of certain chemicals, by increasing/decreasing the collision cross section of the ion within the respective low/high field regions. The addition and subtraction of water molecules to analyte ions is referred to as clustering and de-clustering. Increased humidity also increases the number of water molecules involved in a cluster ($MH^+(H_2O)_2$) formed in the ionisation region. When this cluster experiences the high field in between the electrodes the water molecules are forced away from the cluster reducing the size (MH^+) (de-clustering). As the low field regime returns so do the water molecules to the cluster, thus increasing the ion's size (clustering) and giving the ion a larger differential mobility. Gas density and temperature can also affect the ion's mobility by changing the number of ion-molecule collisions and changing the stability of the clusters, influencing the amount of clustering and de-clustering.

Changes in the electrode channel's environmental parameters will change the mobility exhibited by the ions. Therefore it is advantageous to keep the gas density, temperature and humidity constant when building detection algorithms based on an ion's mobility as these factors would need to be corrected for. However, it should be kept in mind that these parameters can also be optimized to gain greater resolution of the target analyte from the background matrix, during the method development process.

Detection and Identification

As ions with different mobilities travel down the electrode channel, some will have trajectories that will result in ion annihilation against the electrodes, whereas others will pass through to hit the detector. To filter the ions of different mobilities onto the detector plate a compensation voltage (CV) is scanned between the top and bottom electrode (see Figure 12). This process realigns the trajectories of the ions to hit the detector and enables a CV spectrum to be produced.

The ion's mobility is thus expressed as a compensation voltage at a set electric field. Figure 13 shows an example CV spectrum of a complex sample where a de-convolution technique has been employed to characterize

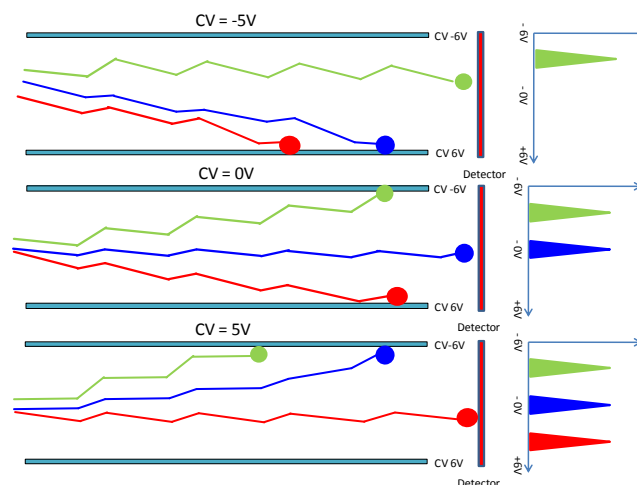


Figure 12 Schematic of the ion trajectories at different compensation voltages and the resultant FAIMS spectrum

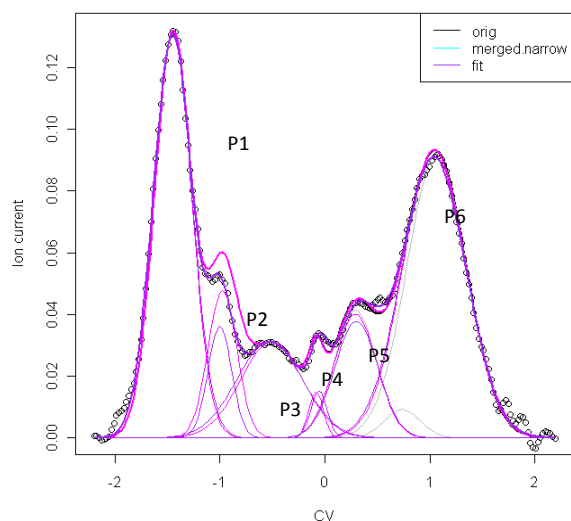


Figure 13 Example CV spectra. Six different chemical species with different mobilities are filtered through the electrode channel by scanning the CV value

each of the compounds.

Changing the applied RF peak-to-peak voltage (electric field) has a proportional effect on the ion's mobility. If this is increased after each CV spectrum, a dispersion field matrix is constructed. Figure 14 shows two examples of how this is represented; both are negative mode dispersion field (DF) sweeps of the same chemical. The term DF is sometimes used instead of electric field. It is expressed as a percentage of the maximum peak-to-peak voltage used on the RF waveform. The plot on the left is a waterfall image where each individual CV scan is represented by compensation voltage (x-axis), ion current (y-axis) and electric field (z-axis). The plot on the right is the one that is more frequently used and is referred to as a 2D color plot. The compensation voltage and electric field are on the x, and y axes and the ion current is represented by the color contours.

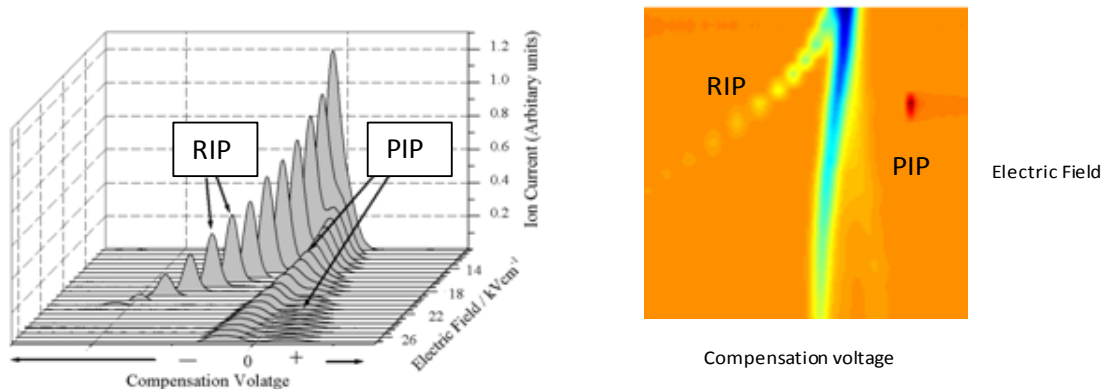


Figure 14 Two different examples of FAIMS dispersion field matrices with the same reactive ion peaks (RIP) and product ion peaks (PIP). In the waterfall plot on the left, the z axis is the ion current; this is replaced in the right, more frequently used, colorplot by color contours

With these data rich DF matrices a chemical fingerprint is formed, in which identification parameters for different chemical species can be extracted, processed and stored. Figure 15 shows one example: here the CV value at the peak maximum at each of the different electric field settings has been extracted and plotted, to be later used as a reference to identify the same chemicals. In Figure 16 a new sample spectrum has been compared to the reference spectrum and clear differences in both spectra can be seen.

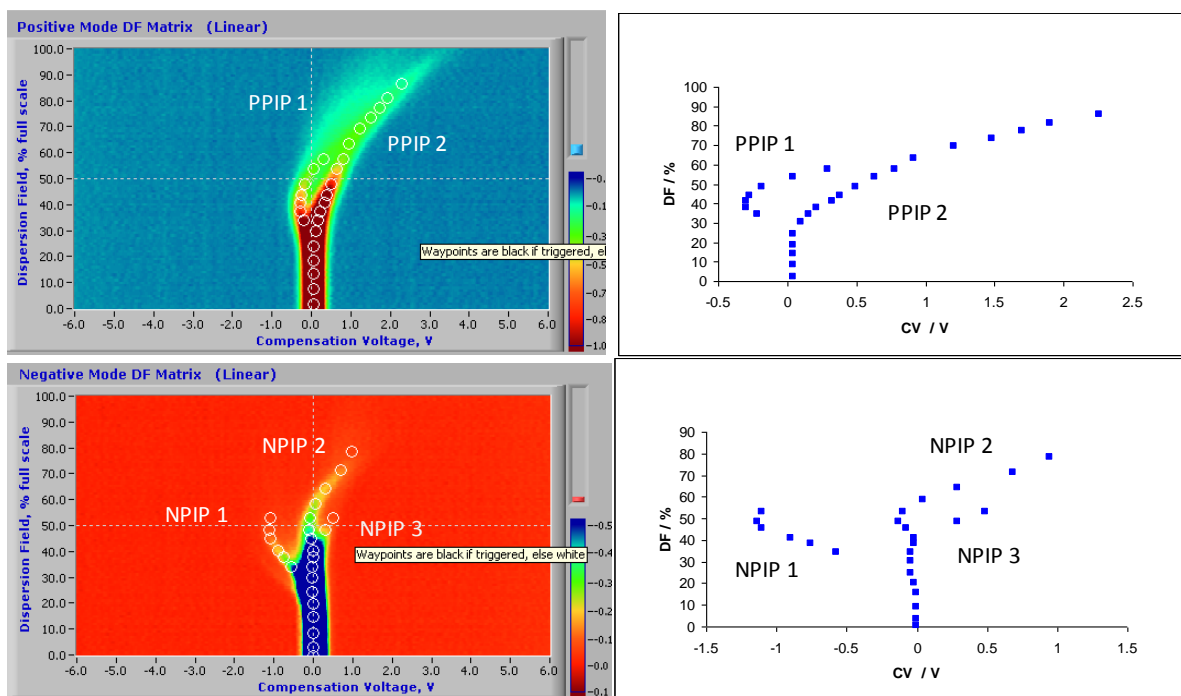


Figure 15 On the left are examples of positive (blue) and negative (red) mode DF matrices recorded at the same time while a sample was introduced into the FAIMS detector. The sample contained 5 chemical species, which showed as two positive product ion peaks (PPIP) and three negative product ion peaks (NPIP). On the right, the CV at the PIP's peak maximum is plotted against % dispersion field to be stored as a spectral reference for subsequent samples.

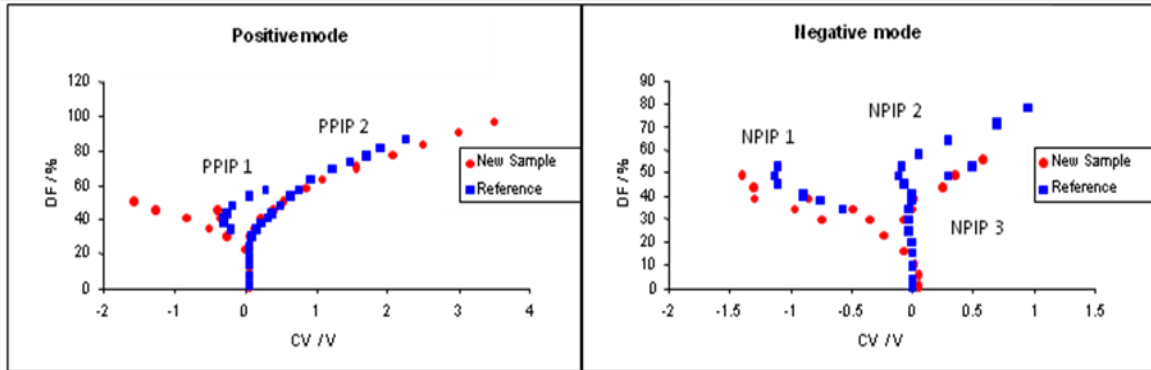


Figure 16 Comparison of two new DF plots with the reference from Figure 10. It can be seen that in both positive and negative modes there are differences between the reference product ion peaks and the new samples